



Analysis of the traditional settlement of Khrysaliniotissa

Objectives

This report focuses on the study of the traditional area of Chrysaliniotissa, located in the walled Old City of Nicosia. Highlighting the presence of a particular architectural element of the area, the semi-open interior space.

We will analyze the dwellings of the area trying to recognize and differentiate the different typologies and patterns that may be significant to understand the structure of this settlement. We will exclude from the scope of study those buildings that due to their extraordinary characteristics we do not consider representative of the traditional architecture of this neighborhood.

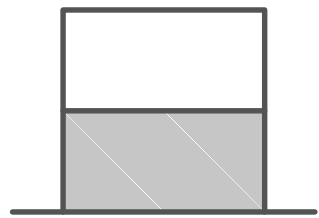
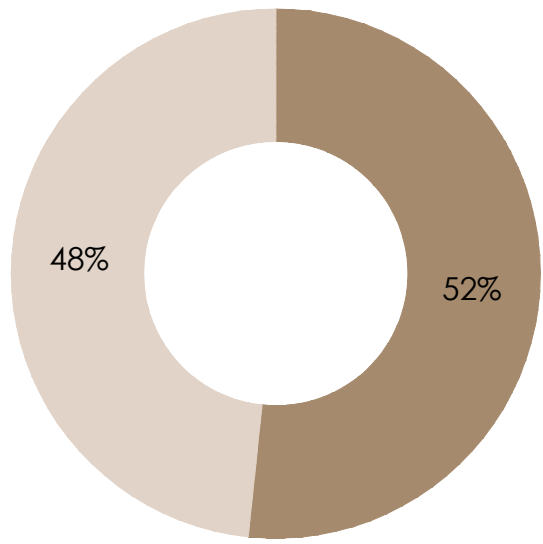
As a result, we will focus on a total of 116 case studies, and throughout the report we will analyze the following aspects that we consider relevant.

- A1-Presence of semi-open space
- A2-Heights of the buildings
- A3-Constructive status
- A4-Tipologies according to the position of the semi-open space
- A5-Presence of balconies and entrance stairways
- A6-Composition of the facades
- A7-Recreation of some of the representative streets

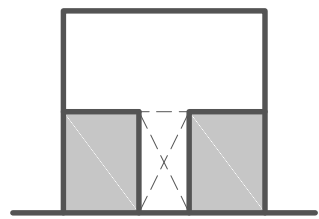
- P1 _ Roof plan
- P2 _ Analitic drawings: private house
- P3 _ New proposal: winehouse



A1 _ Semi-open spaces



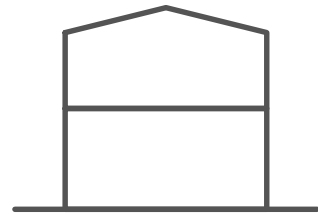
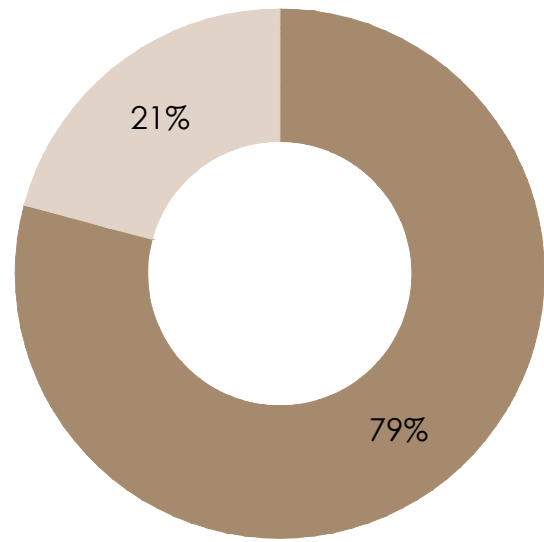
Without semi-open space [55/114]



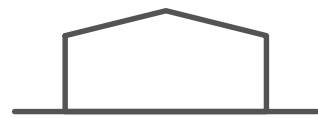
With semi-open space [59/114]



A2 _ Heights of the buildings



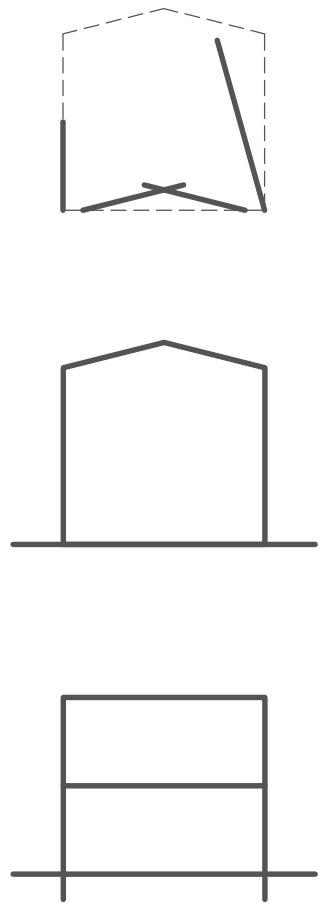
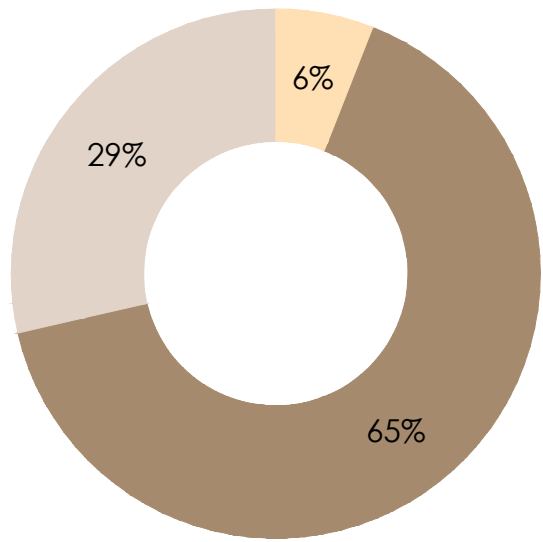
>1 storey [92/116]



1 storey [24/116]



A3 _ Constructive status



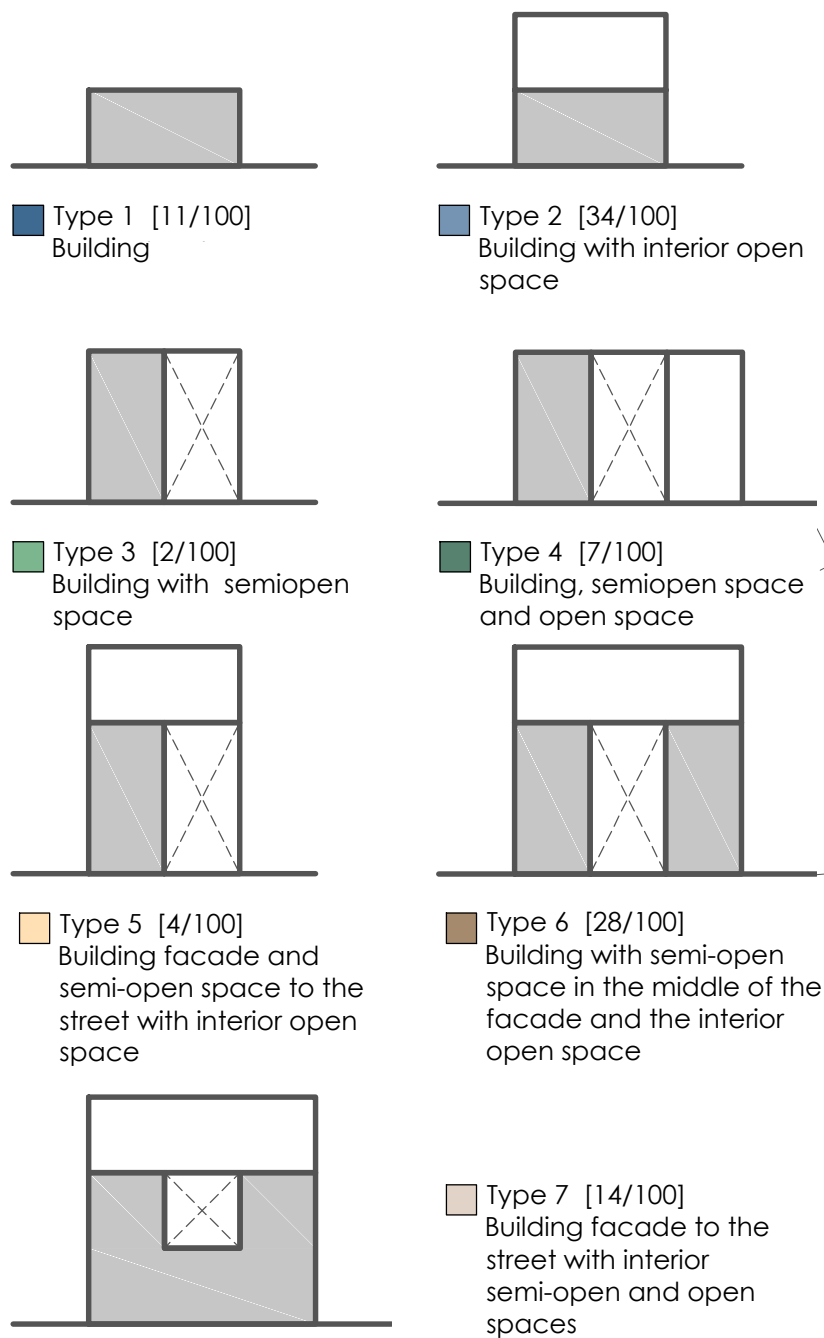
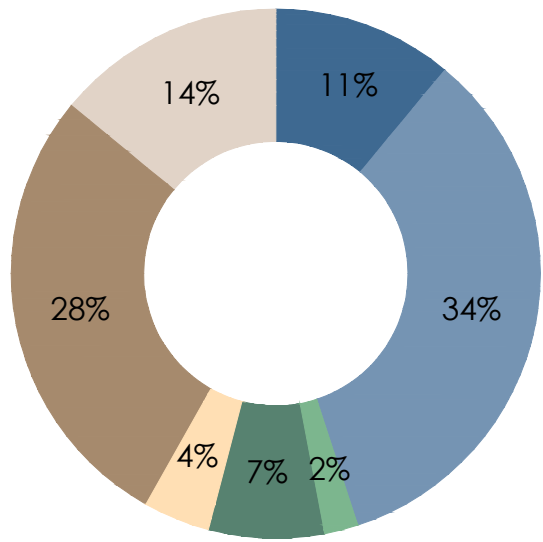
Demolished [7/115]

Traditional [75/115]

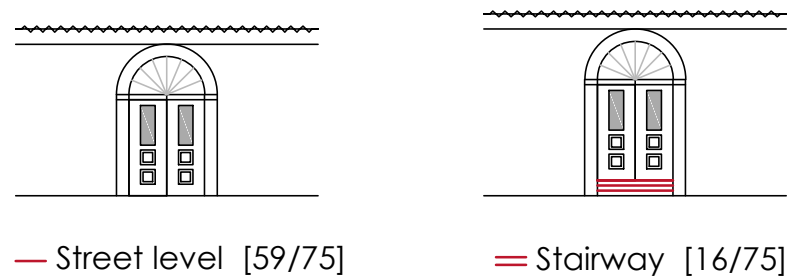
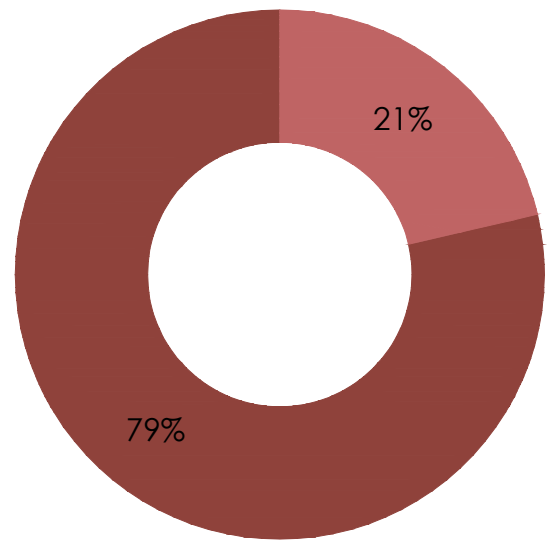
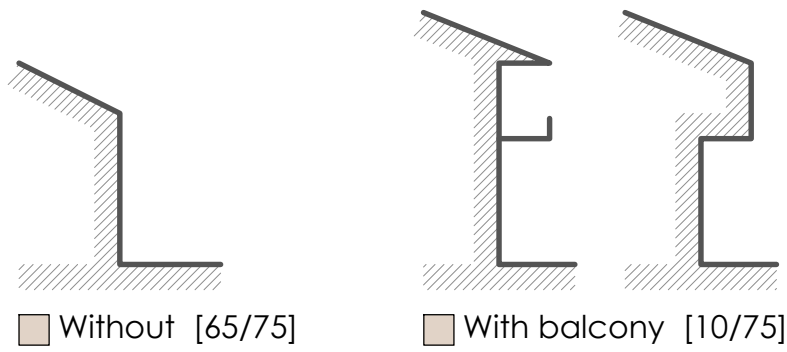
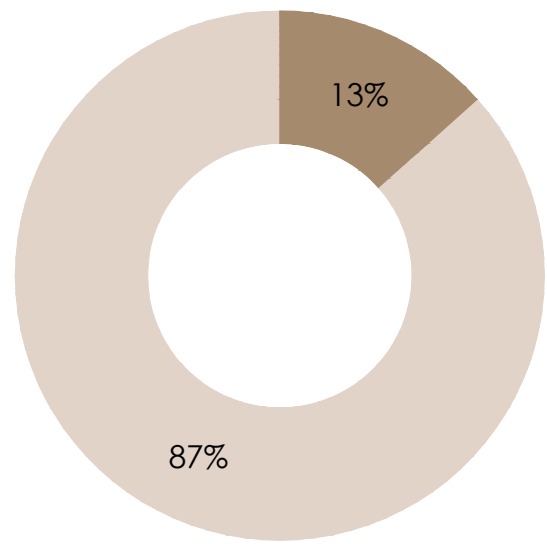
Modern [33/115]



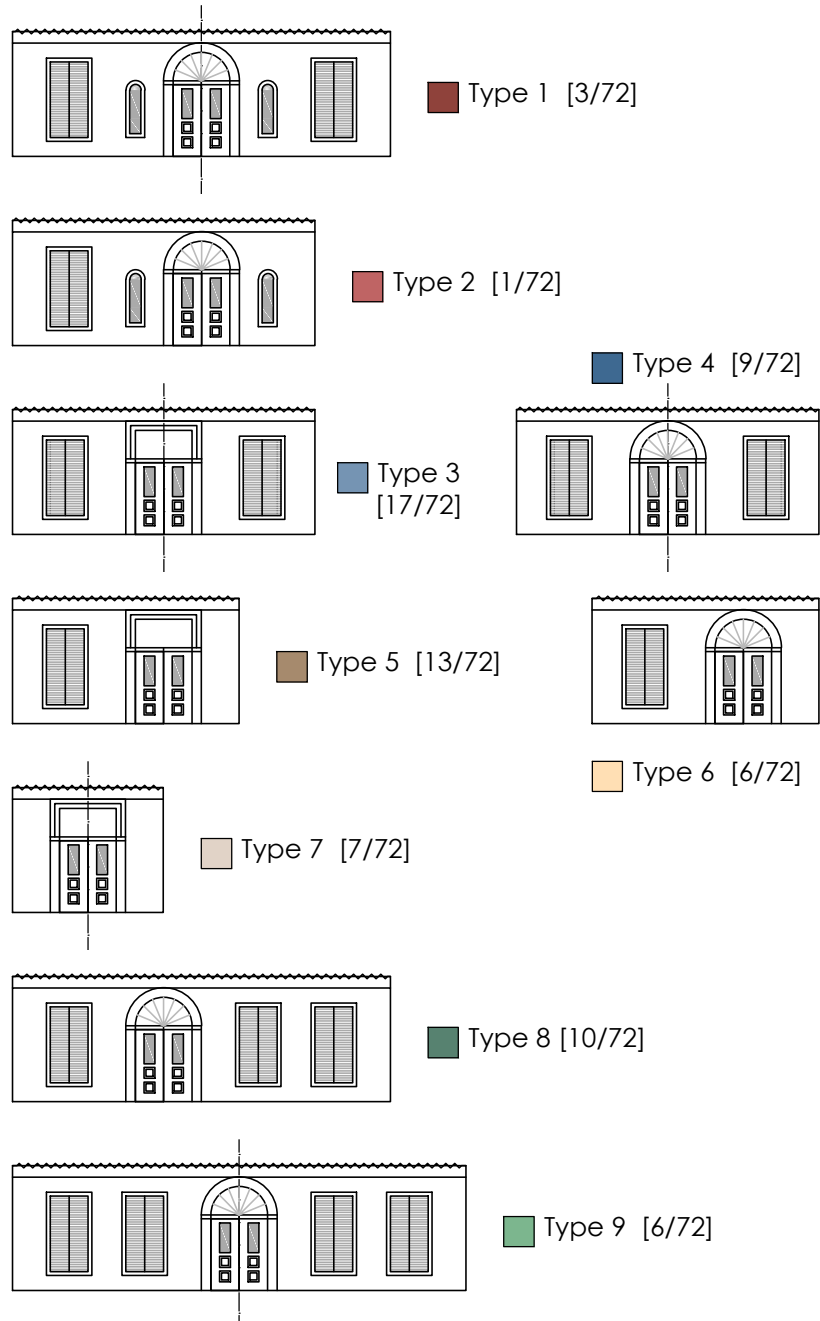
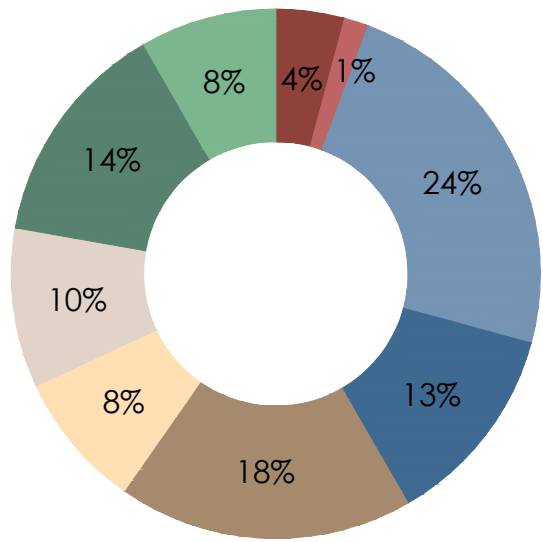
A4 _ Typologies according to the position of the semi-open space



A5 _ Presence of balconies and entrance stairways



A6 _ Composition of the facades



A7 _ Srteet recreations

1/2500



Street facade 1



Street facade 2



Street facade 3

A7 _ Srteet recreations

1/2500



Street facade 4



Street facade 5



Street facade 6

A7 _ Srteet recreations

1/2500



Street facade 7



Street facade 8



Street facade 9

A7 _ Srteet recreations

1/2500



Street facade 10.1



Street facade 10.2



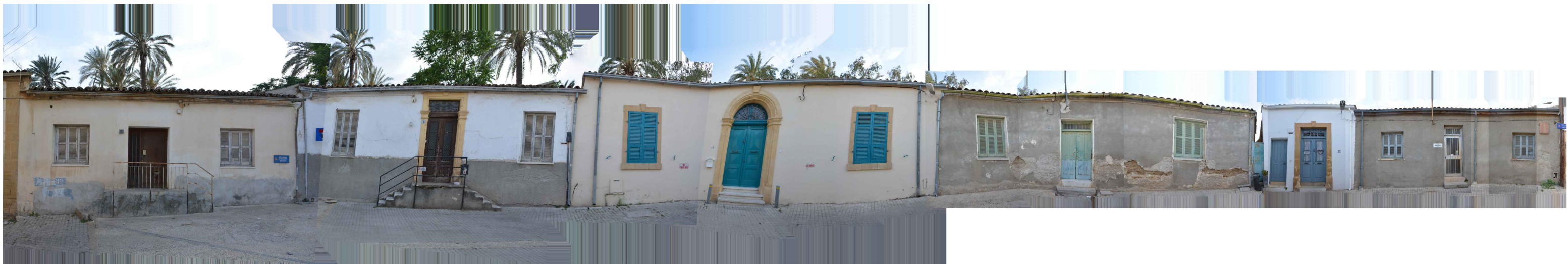
Street facade 10 complete

A7 _ Srteet recreations

1/2500



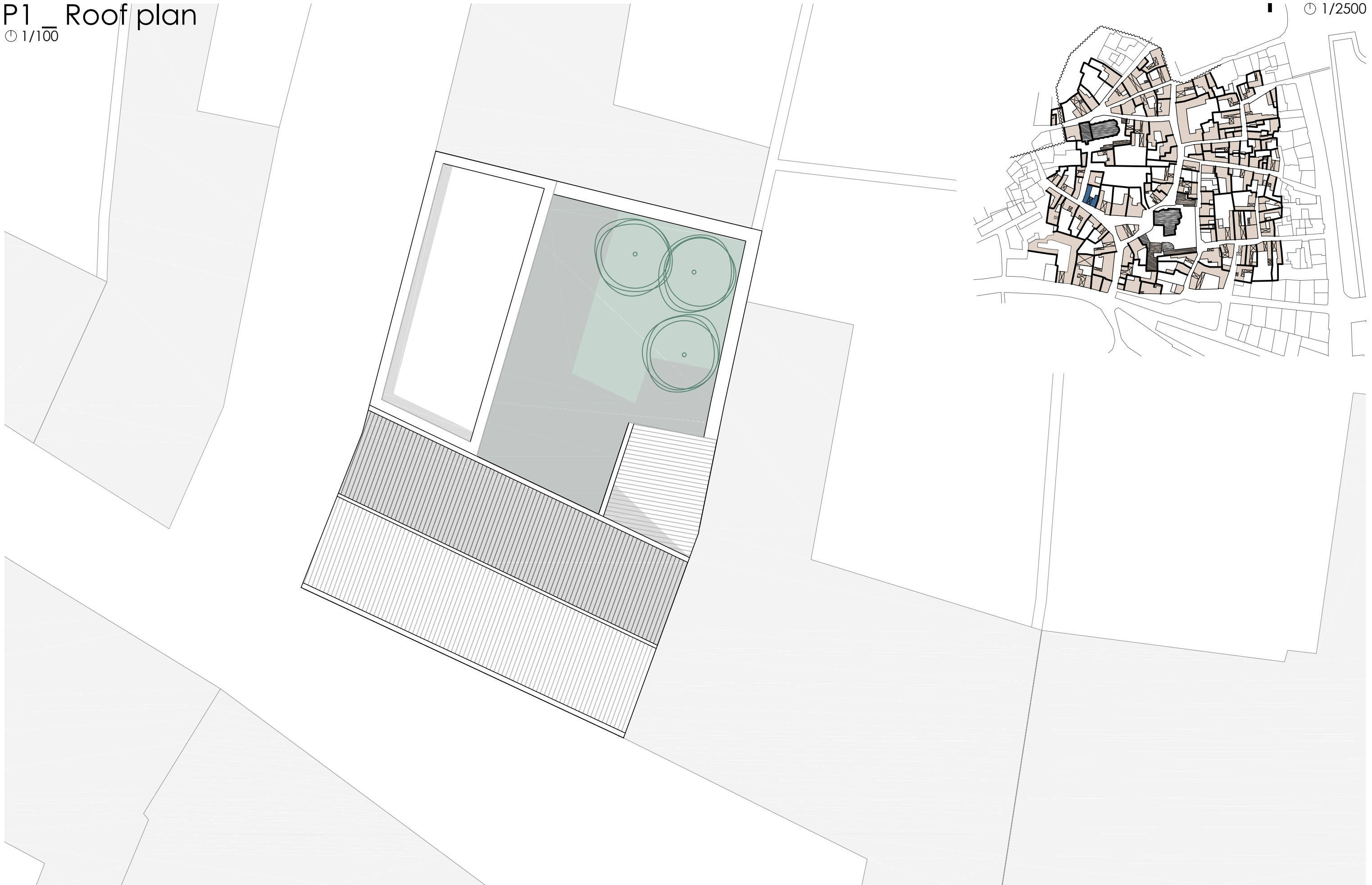
Street facade 11.1



Street facade 11.2

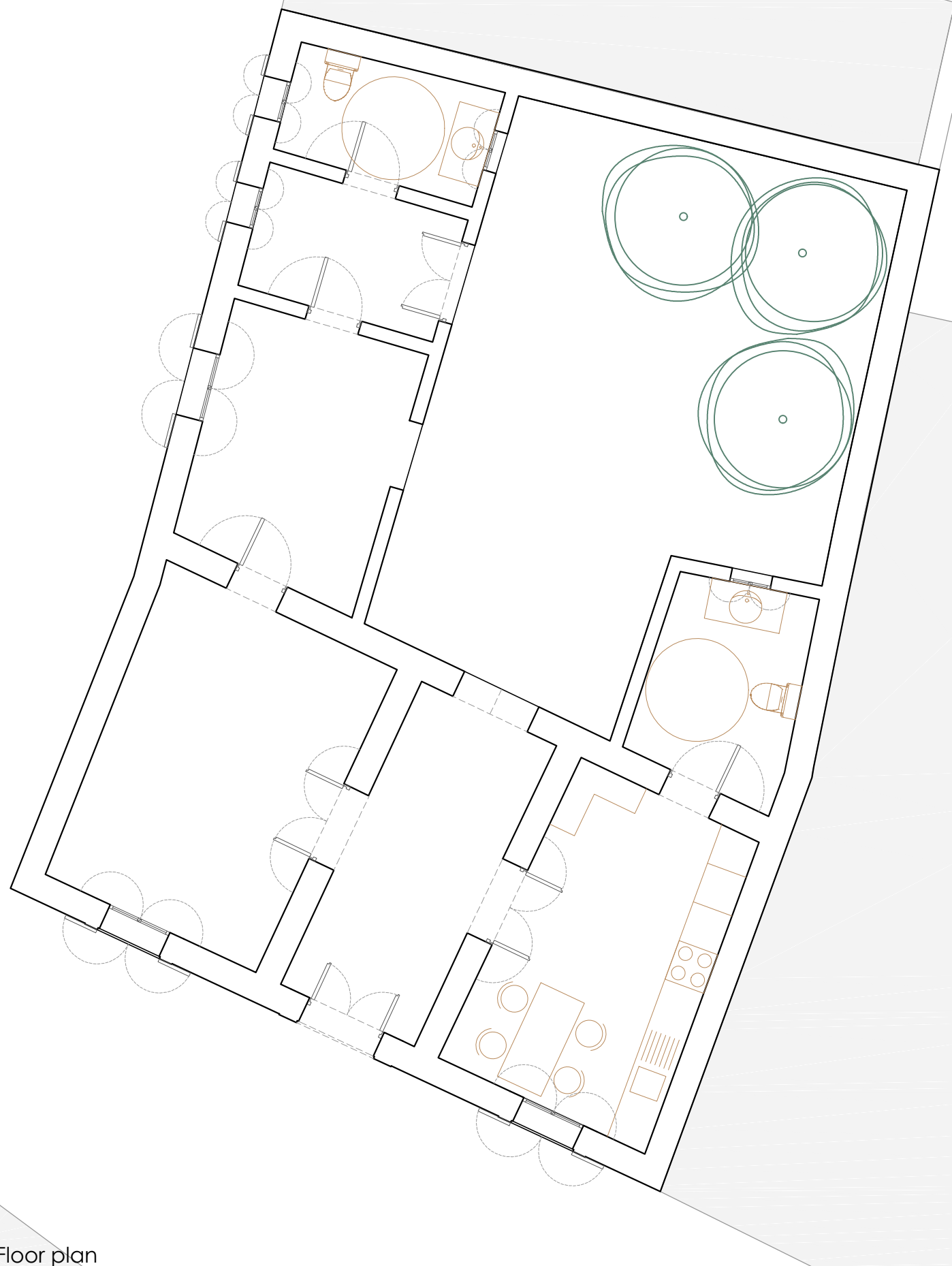


Street facade 11 complete

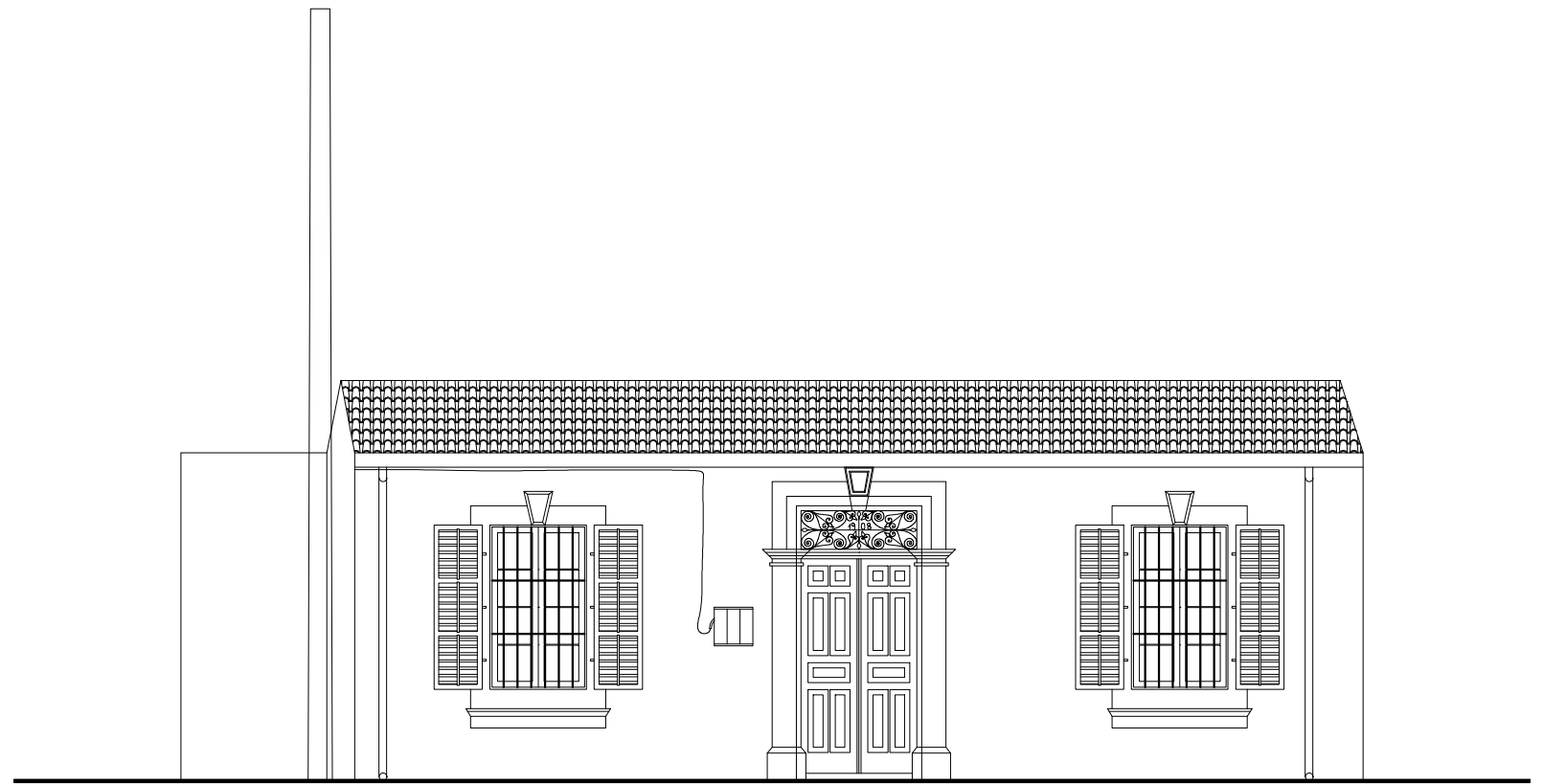


P2_ Analytic drawings: private house

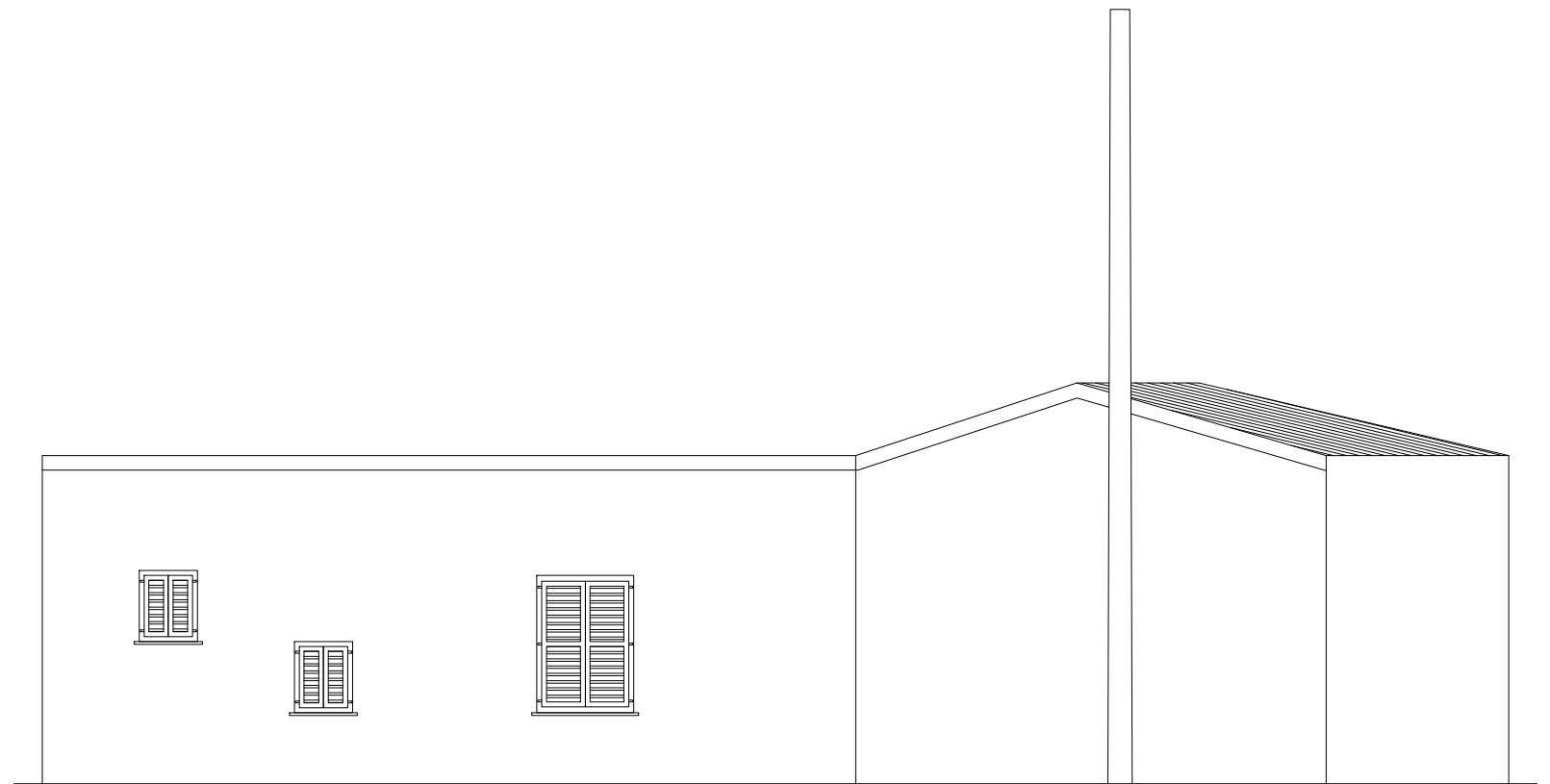
1/75



Floor plan



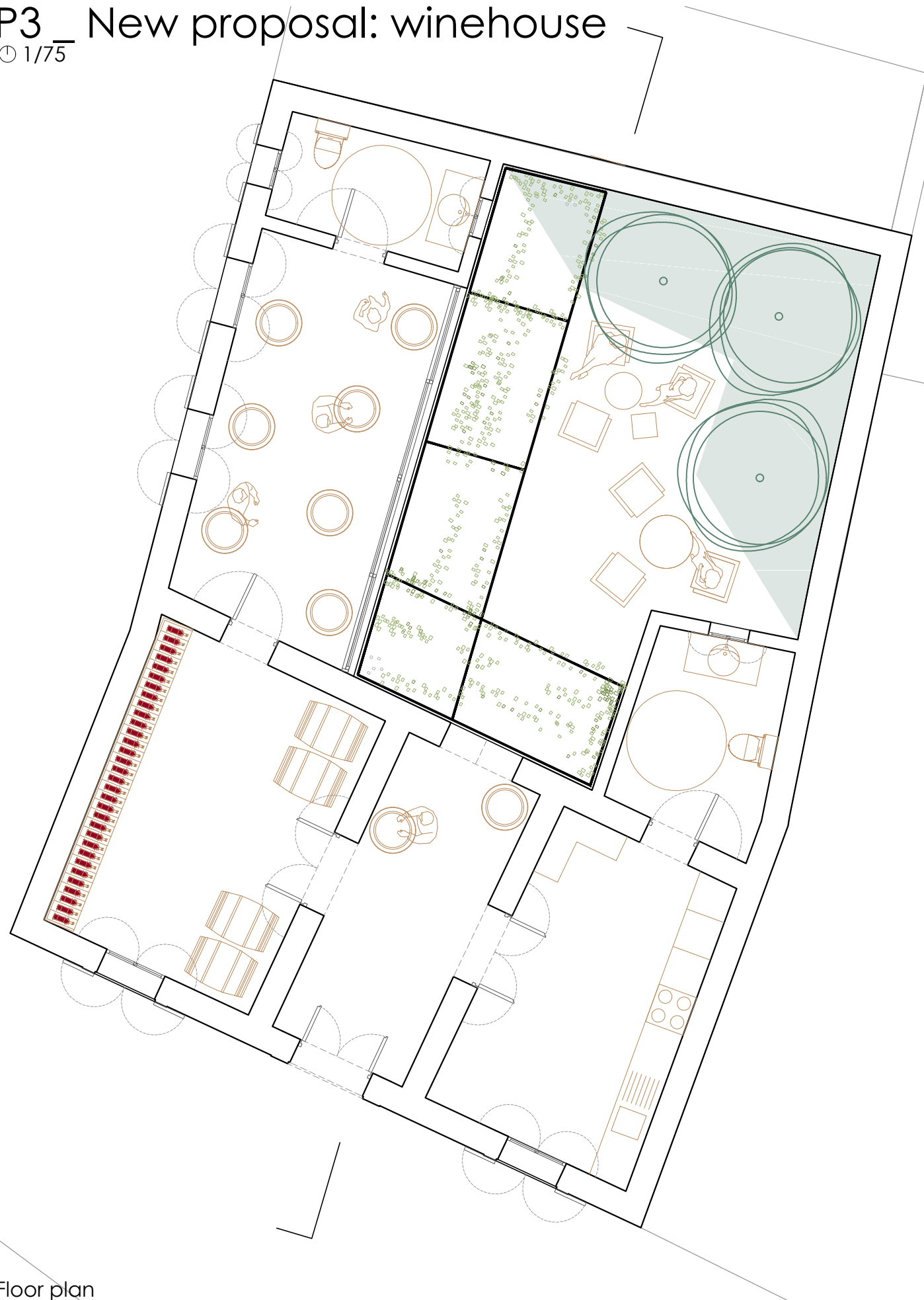
South elevation



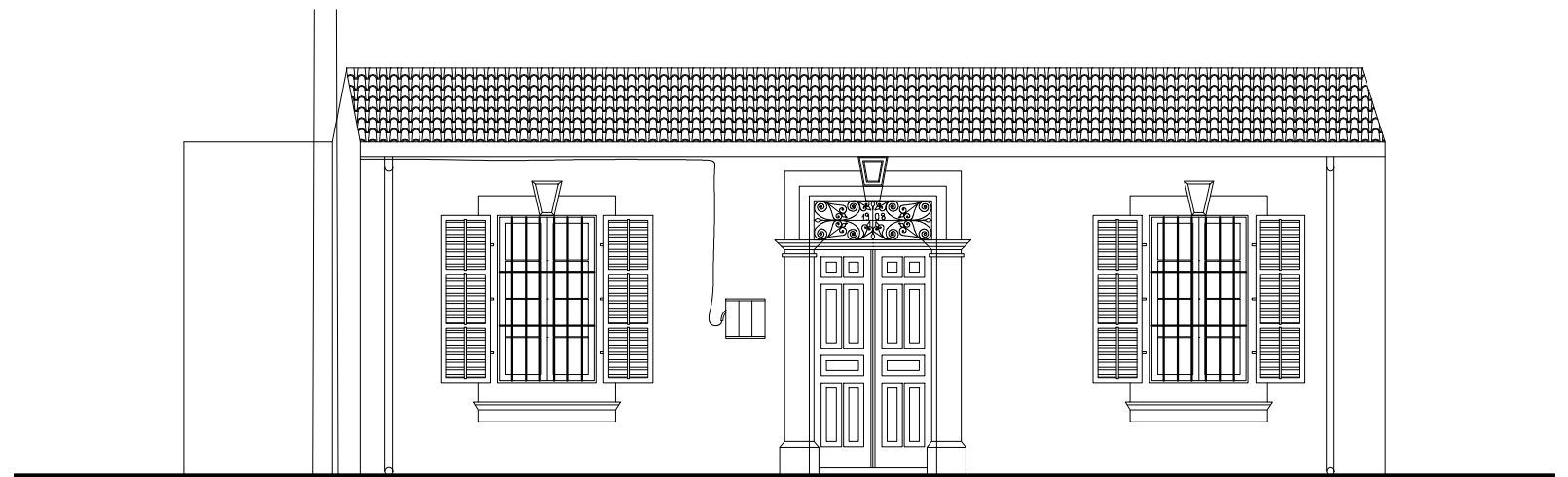
West elevation

P3 _ New proposal: winehouse

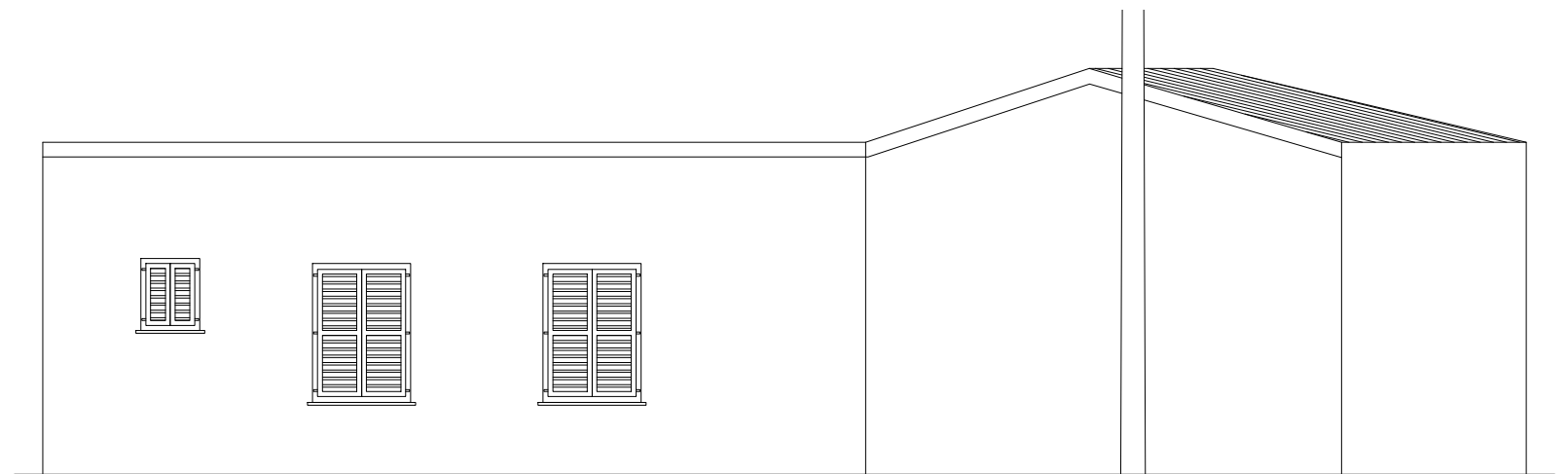
1/75



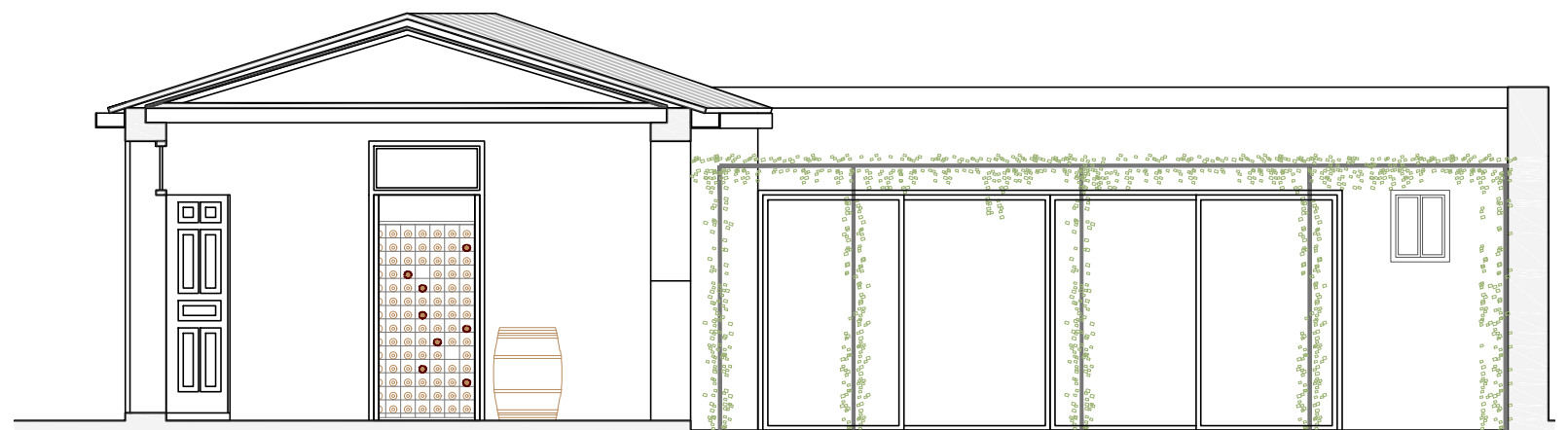
Floor plan



South elevation



West elevation



Section